

Buccal Kit Instructions

Please read through and follow each of these steps to ensure your sample is successfully collected.

Do not eat, drink (even water), chew gum, or smoke at least 30 minutes before collecting your sample.



Labeling Your Sample: Your kit will include either a yellow sticker with your information or a blank label. Follow the instructions that match what you received:

If you have a yellow sticker label with your first & last name and date of birth:

- Check that your name and date of birth are correct.
- Place the sticker on the tube without covering the barcode.

PUT THE NAME
LABEL ON YOUR
TUBE

Name: _____
D.O.B.: _____



If you have a blank label:

- Write your full name and date of birth in the format mm/dd/yyyy in pen.
- Apply it to the tube without covering the barcode.

Name: _____
D.O.B.: _____

Collect your buccal sample using the directions below:



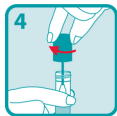
Open package and remove collector without touching sponge tip. Place sponge as far back in the mouth as comfortable and rub along the lower gums (see close up image) in a back and forth motion. Gently rub the gums 10 times. If possible, avoid rubbing the teeth.



Gently repeat rubbing motion on the opposite side of the mouth along the lower gums for an additional 10 times.



Hold the tube upright to prevent the liquid inside the tube from spilling. Unscrew the blue cap from the collection tube without touching the sponge.



Turn the cap upside down, insert the sponge into the tube and close cap tightly.



Invert the capped tube and shake vigorously 10 times.

Scan here for a YouTube video on the sample collection process:



Kit Shipment & Return Instructions

Please read through and follow each of these steps to ensure your sample is successfully returned.

Put the **securely capped tube** into the specimen bag with the absorbent pad, then seal the bag.

Write the date you collected your sample in a mm/dd/yyyy format in pen to the label affixed to the inside cover of the box

Remove the prepaid shipping label and **attach it to the back of the original box.**

Close the box and **seal it securely** by removing the film sticker attached to the front of the box.

Drop off your package with the carrier listed on your return shipping label within one day of collection.

Questions?

Contact your study team directly for support.